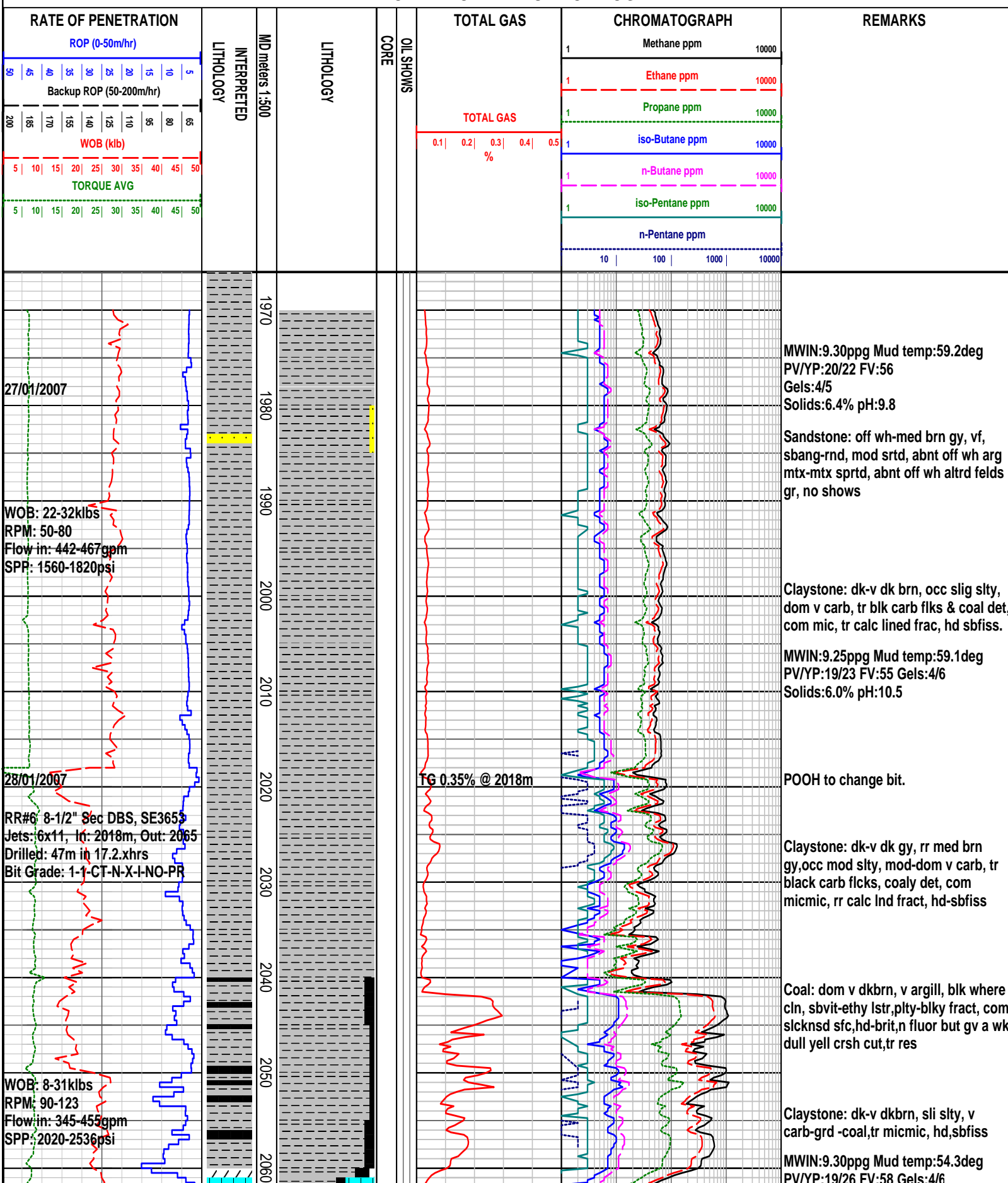


# FORMATION EVALUATION LOG



27/01/2007

WOB: 22-32klbs  
RPM: 50-80  
Flow in: 442-467gpm  
SPP: 1560-1820psi

28/01/2007

RR#6 8-1/2" Sec DBS, SE3653  
Jets: 16x11, In: 2018m, Out: 2065  
Drilled: 47m in 17.2.xhrs  
Bit Grade: 1-1-CT-N-X-I-NO-PR

WOB: 8-31klbs  
RPM: 90-123  
Flow in: 345-455gpm  
SPP: 2020-2536psi

